

Alternative SNAP 2007 File Location Information

Overview

In instances where there is not enough bandwidth to the Internet to efficiently run SNAP tutorials or take SNAP Skill exams, it may be necessary to access the data files from a location other than the Internet. The *Alternative SNAP 2007 file location* feature allows you to set up local access to SNAP content. This document explains how to setup the SNAP system to access the SNAP data files locally.

License

If you have previously installed the SNAP plug-in and have agreed to the License Agreement, you may copy these files to any local location on your network, shared DVD disc drive, USB flash drive, or desktop/notebook computer.

Step 1

Copy the folder \snap, and all sub-folders and files contained within, in their entirety, onto a local location that can be accessed directly by the specific computer using the SNAP system. The \snap folder and its contents can be copied to a DVD data disc, USB flash drive, local network location, or individual desktop/notebook computer. The SNAP data files require 1.6GB of storage space. The \snap folder and its contents can reside in a network sub-folder directory structure. Regardless of the local location of the \snap folder, there can be no spaces in the directory tree name.

Step 2

The specific user account (instructor or student) accessing the SNAP system must be configured to point to the local location of the \snap folder. To add a new location or select a pre-defined location, the user must login to the SNAP system and select [View Profile](#) from the Administration block on the right of the page. This applies to both students and instructors.



Step 3

From the bottom of the profile page select **Manage Snap resource location**.



Step 4

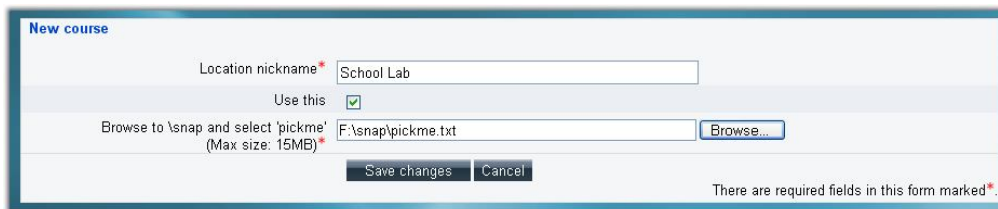
The default location for using SNAP is “SNAP Internet”—in other words, the SNAP server via the



Internet. This option is always available. Users may create many different locations; for use in computer labs, home computer, or portable notebooks.

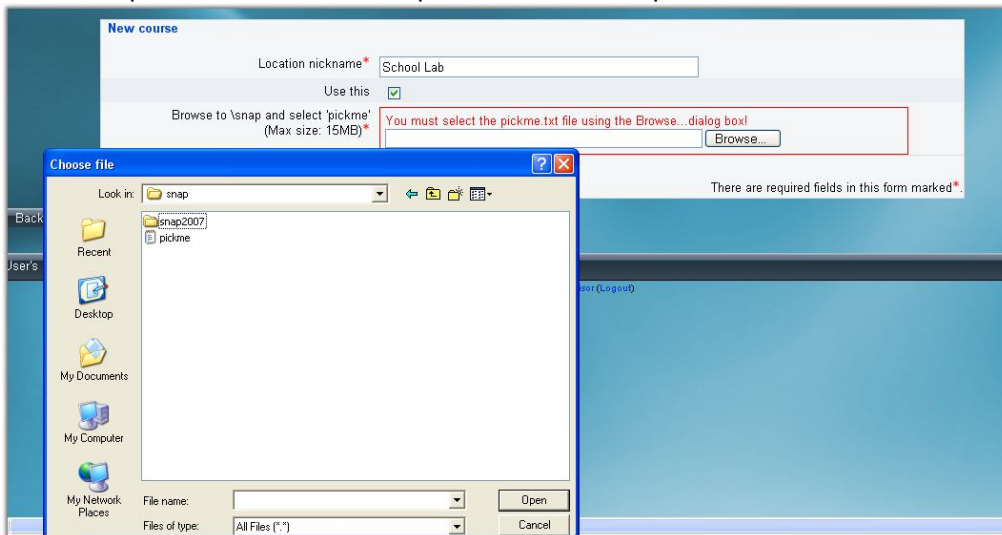
Step 5

To create and use a new location select **Add a new location**. On the Create Location screen, fill in the



nick name for your new location. Make sure the *Use this* box is checked. Next either type in the path of the SNAP data files or select the Browse button and navigate the Choose File dialog box to the location of the \snap folder, within the \snap folder select the “pickme” file. Select **Save Changes** to create and

use this location.



Use of Snap Alternative Locations

For this and future uses of SNAP tutorials and skill exams you will be accessing the SNAP data files from your selected location. If you are using SNAP from more than one computer and the new computer is not accessing the SNAP files from the exact same location path, you will need to change the selected location of the SNAP data files to the local location of the files. NOTE: If this is not done properly your SNAP Tutorials and Skill exams will not launch.

To change the current location of the local SNAP data files, return to [View profile](#), select **Manage Snap resource location**, select the current SNAP data file location, select **OK**.



nickname	ip address	path	selected	actions
default		SNAP Internet	<input type="radio"/>	
School Lab	69.54.33.62	F:\snap\	<input checked="" type="radio"/>	delete edit

Buttons: Add a new location, OK

The location of the SNAP data files when using SNAP on the school lab could be different than the location of the files when using SNAP at home. From any location you can switch to the default SNAP Internet location to use SNAP tutorials and skill items. However, if you have selected a location other than the Internet, the SNAP system will warn you that you are using an alternative location every time you log in to SNAP.



Location Warning - If the computer you are currently using will find the SNAP data files here - F:/snap/snap2007/ - select OK, otherwise select "Change Location" then select an existing location or add a new one.

Buttons: OK, Change Location